



Application

For the permanent sealing of micro duct bundles with up to 52mm outside diameter and long-term underground storage. Whole bundle of micro ducts is sealed cost-effectively in one operation. The sealing cap has control pins (patented*) which indicate a correct installation. Depending on the version, the sealing cap suits for micro duct bundles with or without a central micro duct. For fixation of sealing cap on bundle, either the central micro duct or a micro duct in the middle of the bundle is used. For easy installation the sealing cap has a central thorn with self-tapping thread. For temporary sealing during transport and storage also reusable sealing caps are available.



Technical Data:

Attribute	Value
Application	Long-term storage underground
Temperature range	Operating: -40°C to +60°C Storage: -40°C to +40°C (store dry and upright according to packaging imprint) Installation: +5°C to +35°C
Sealing performance	Dust and liquid media, according to protection code IP68 5m water head
Sealing internal pressure	1.0 bar
Size	Ø 58mm, length 55mm, with central thorn 65mm
Weight	95-105g
Cap material	Cap shell (black) made from impact resistant POM with red control pins made from POM, UV- and weatherproof
Sealing material	Sealing compound permanently elastic, color grey or green (sealing compound must not expose to sunray)
Recycling	All used materials are recyclable

Listed values apply for properly installed product according to installation instruction (90° cut with micro duct cutter).

Scope of delivery

Sealing cap with control pins for indication of correct installation, filled with sealing compound, packed in card board box. Order quantity 50 piece in a box.

Capacity

Micro duct bundle type	Cap size Order No.	52-7	52-10	52-12	52-14	52-16
		01-047-03 A	01-021-03 A	01-048-03 A	01-049-03 A	01-050-03 A
Number micro ducts 7x 1.5mm ²⁾ no central micro duct		6/7/8/12/14/ 18/19/24	-	-	-	--
central micro duct 12x 2mm ²⁾		-	-	7/22	-	-
central micro duct 14x 2mm ²⁾		-	-	-	12/14/22/24	-
Number micro ducts 10x 2mm ²⁾ no central micro duct		-	2/3/4/5/6/7/8/ 9/10/11/12/24 ¹⁾	-	-	-
Number micro ducts 12x 2mm ²⁾ no central micro duct		-	-	4/5/6/7/8/ 10/12	-	-
Number micro ducts 14x 2mm ²⁾ no central micro duct		-	-	-	3/4/5/6/7	-
Number micro ducts 16x 2mm ²⁾ no central micro duct		-	-	-	-	3/4/5/6/7

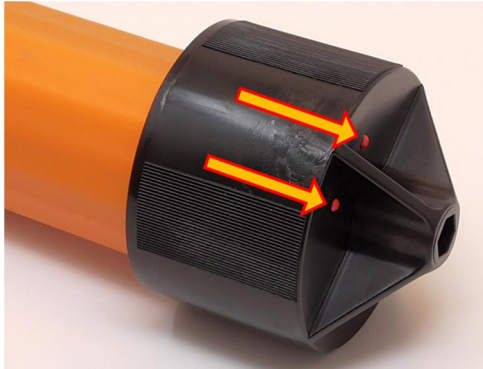
¹⁾ Note for bundle 24x10: use 2 sealing caps of size 12x10

²⁾ Tolerances shall apply for micro ducts according to DIN EN 50411-6-1 und DIN EN 60794-5-ff

*Patented for Elitex GmbH, EP Patent Nr. 13153451.3

Product description permanent sealing caps

Most frequent application of permanent sealing caps is long-term sealing of micro duct bundle underground. It is of crucial importance to seal micro ducts even for years i.e. at the end of a line. Often used makeshift such as tapes or shrink caps are here unsuitable materials, because they neither tightly can close the micro duct bundle, nor are sustainable. Our permanent sealing caps prevent the ingress of water and dirt of any kind. The integrated sealing compound is distributed in the individual micro ducts when you turn on the cap onto the bundle. Sealing compound might appear also outside of bundle. This is a normal effect and has no influence on sealing performance. All micro ducts are sealed thus jointly and cost-effectively in one operation.



The sealing cap has control pins (patented *) which indicate a correct installation. In case of accidentally blown micro duct, the pressure can escape at the sealing cap. Due to the self-healing effect of the sealant, the micro duct seals off itself. The permanent sealing caps have been developed for permanent underground use. If network construction should be continued further at a later date, the permanent sealing cap will be removed like described in the installation instruction. For application during the construction phase also temporary sealing caps are available. Permanent sealing caps from Elitex are available for most common micro duct bundles with or without central duct. The product has been proven thousand and on times for safe sealing and fast application.

Selection of matching sealing cap

Please select sealing cap accordingly to your micro duct bundle. Description of cap size i.e. 52-12 or 52-14 indicates max outer diameter of bundle (52mm) and the size of center thorn (12 or 14mm), for fixation of the sealing cap at a central micro duct of 12/2mm or 14/2mm. Sealing cap size 52-7, 52-10 and 52-16 are suitable for micro duct bundle without central micro duct. For fixation of sealing cap on bundle use a micro duct in the middle of the bundle. Please also follow according notes in the installation instruction.



Tools

Before installation of a sealing cap, the micro duct bundle must be cut rectangular with suitable tools according to duct manufacture guideline. Cutting must not be made with chipping tools (i.e. saw).

Please visit our webpage www.elitex-gmbh.de/abdichtkappen/ for further information about our sealing caps, like instructions, videos and tender text.



Elitex GmbH

Agricolastraße 3a
D-85247 Schwabhausen
Mail: office@elitex-gmbh.de
www.elitex-gmbh.de

Elitex GmbH and its affiliates referenced herein have made every reasonable effort to ensure the accuracy of the information contained in this instruction. Elitex GmbH cannot assure that this information is free of errors. For this reason, Elitex GmbH doesn't make any representation or offer any guarantee that such information is accurate, correct, reliable or current. Elitex GmbH reserves the right to make any adjustments to the information at any time. Elitex GmbH expressly disclaims any implied warranty regarding the information contained herein, including, but not limited to, the implied warranties of merchantability or fitness for a particular purpose. Elitex GmbH only obligations are those stated in Elitex GmbH specifications, standard terms and conditions of sale. Elitex GmbH will be in no case liable for any incidental, indirect or consequential damages arising from or in connection with, including, but not limited to, the sale, resale, use or misuse of its products. Users should rely on their own judgment to evaluate the suitability of a product for a certain purpose and test each product for its intended application.
Product and System patented for Elitex GmbH. © Copyright Elitex GmbH 2018 Version 1.0